



## Merry Christmas and a Happy New Year from the Chief Executive

**Welcome to our festive edition of Parish and Partners in which we traditionally look back over the previous 12 months and look forward to new challenges in the New Year..**

It goes without saying that 2020 has been one of the most challenging in the modern history and will undoubtedly have a lasting legacy into the future. It is hard to believe that 12 months ago we had not even heard of the COVID virus, let alone contemplate the effect that this would have on the way that we live our lives.

Since March, we have had more than 2,200 cases of COVID within the District and this had unfortunately contributed to the death of 188 of our residents. All our thoughts and best wishes go out to their families for whom Christmas will be such a difficult period.

Whilst there are so many negatives coming out of this pandemic including the devastating impact on our local economy, I think that we also need to celebrate what we have collectively achieved in supporting the most vulnerable in our society. I would like to thank all of you for your efforts in working with our communities and volunteers across

the whole of the District - it really brought out the very best in people in responding. This assistance was invaluable to support the efforts of the District and the County Council in working with those hardest to reach individuals in isolated communities. Thank you again.

With the news that vaccines are on their way and indeed have started to be rolled out, there is at least hope that during 2021 life will return to some semblance of normality. However, we still have one final push to get through the long dark winter nights, which the virus enjoys so much! We will be supporting colleagues however we can in the NHS and we are also working closely with the County Council on putting in place enhanced testing facilities to try and get on top of the outbreak.

As mentioned above, the impact on our economy has been enormous, it has been reported that the Stratford-on-Avon District is the fourth worst affected area in the country. It was due to this impact, that we challenged the Government's decision in relation to tiering this month, whilst rates in the District were low, it was difficult to understand why our businesses in the hospitality could not be allowed the opportunity to trade. We will continue support business

through the payment of grants and working with the Coventry and Warwickshire Growth Hub to provide advice on how businesses can adapt to the new normal.

This year has had a significant impact upon the finances of the Council; which in turn will lead to some very difficult decisions in the New Year, as we fully understand the funding that we will receive from Government. However, in meeting these challenges the Council is working ever more closely with Warwick District Council, and we are expecting to make an announcement in the New Year on how we can take this relationship forward for the benefit of our communities.

I would like to thank you once more for all of your support over the last year. I do hope that you will get the chance to recharge your batteries over the Christmas period and again look forward to a future in which we have got the COVID virus under control.

Best Wishes

David



## 2020 Year Review

### January

- SDC's 18th Annual Sports Awards – attended by 300 guests and hosted by Iwan Thomas MBE.
  - Senior Sports Person: Maria Giordmaina, for her stellar year of bodybuilding success at international level.
  - Junior Sports Person: Lewis Byng of Stratford Athletic Club

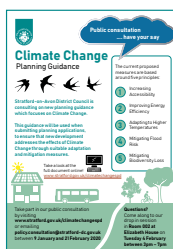


Iwan Thomas MBE,  
Maria Giordmaina,  
Cllr Jo Barker



Lewis Byng  
(Stratford Athletic Club),  
Cllr Kate Rolfe,  
Iwan Thomas MBE

- Death of Cllr Peter Barnes (Welford-on-Avon), the longest serving District Councillor with over 29 years continuous service.
- SDC facilitates FREE EU Citizens' Rights Awareness Events in Bidford and Alcester
- Six-week Public Consultation on Climate Change Adaptation and Mitigation - a key and significant piece of work to accompany the Core Strategy.



- Neighbourhood Plan for Clifford Chambers & Milcote Neighbourhood Plan Area consultation.
- Dog owner from Southam fined almost £10,000 for barking dogs
- Cabinet agree budget proposals, including:
  - Financial Support for the Fred Winter Project** - £60,000 ongoing
  - UBUS Contract Extension** - £109,000 ongoing
  - Core Strategy Review** - £1.6m one-off
  - Housing Register IT Platform Upgrade** - £35,000 one-off
  - Waste Contract Renewal** - Consultancy Advice - £50,000 one-off
  - Climate Change Strategy Funding** - £0.5m one-off
- SDC hosts a County Lines Summit – the event brought together a number of different partners and agencies with an aim to gain a picture of County Lines across the district, improve understanding locally and to help shape the review of the current action plan and influence future Partnership priorities.
- SDC takes ownership of the Greig Hall site in Alcester - following a long-running legal dispute with the Greig Trustees.
- SDC's Licensing Team licence its first electric hybrid taxi vehicle as part of the District Council's commitment to climate change and the need for cleaner and greener vehicles.



### February

- SDC invests £796,000 in a major CCTV upgrade for the District including:
  - Upgrade of the CCTV Control Room and equipment
  - A new CCTV operating system
  - Replacing all 87 existing analogue cameras for digital cameras – across 8 towns in the District
  - Upgrading BT fibres lines to transmit digital images from the cameras to the CCTV Control Room
  - Provision for up to six new cameras at identified strategic locations across the District
- SDC's sixteenth Neighbourhood Plan Referendum for Loxley. Result: Yes 102 / No 16. Turnout 39.46%.
- Neighbourhood Plan for Napton-on-the-Hill Neighbourhood Plan Area consultation.
- SDC facilitates FREE EU Citizens' Rights Awareness Events in Wellesbourne and Southam
- Council Tax set for 2020/21 – all services provided by SDC cost £2.77 a week for a Band D household.
- SDC secures up to £201,000 in funding from the Ministry of Housing, Communities and Local Government to support initiatives designed to help reduce and eliminate rough sleeping in the district.
- SDC's new self-service solution for residents and businesses, giving them 24/7 access to Council Tax, Housing Benefit and Business Rate information receives its first 1,000 hits.



## 2020 Year Review

### March

- SDC together with Stratford-upon-Avon Town Council and Warwickshire County Council host 'Stratford Dementia Friendly Town' event to raise awareness of dementia and the work being done to make Stratford-upon-Avon a dementia friendly town.
- The Greig Leisure Centre in Alcester reopens to the public following a month-long closure to allow for essential health and safety works to be carried out as well as improvement works to the facilities.



- Manuela Perteghella (Lib Dem) wins Welford-on-Avon by-election with 472 votes
- Work to start on first phase of Long Marston Garden Village.
- The bid to part-fund the South Western Relief Road (SWRR) around Stratford-upon-Avon is unsuccessful in the first round of Government funding.
- Death of Former Councillor Revd Neville Beamer - District Councillor from 2007 to 2015 representing the Stratford Guild and Hathaway Ward.
- Warwickshire Rural Housing Association to build seven affordable eco homes in Bearley.
- From 24 March to 29 April daily weekly COVID-19 updates are published.
- SDC suspends all legal and any other enforcement action to recover unpaid Council Tax or Business Rates, to help our residents and businesses deal with financial issues caused by COVID-19.
- SDC Environmental Health officials advise businesses of new COVID-19 regulations.
- SDC to administer the Small Business Grant Fund to support businesses across the district.
- Bidding on Homes Choice Plus suspended.
- Working in partnership, Stratford's Community Hub was established to distribute essential items and co-ordinate wider support to clinically vulnerable people who were self-isolating and shielding.

### National lockdown

SDC responds to Government announcement in relation to the on-going **COVID-19 outbreak** measures - Elizabeth House remained open and operational and provision was made for staff to work from home.

- COVID-19 service update:
  - Many SDC services suspended - health walks, UBUS, Committee meetings, SCAN groups, The Link, The Visitor Information Centre.
  - Events cancelled including - The Shakespeare Birthday Celebrations, Police and Crime Commissioner elections and VE Day celebrations
- In accordance with Government guidance, SDC's main reception at Elizabeth House in Stratford-upon-Avon is closed to the public at the end of March - but council remains operational.



## 2020 Year Review

- Extraordinary Council meeting held - amendments agreed to the Council's Constitution to enable decisions to be made quickly during the pandemic.
- Free parking offered to NHS staff and volunteers in SDC town centre car parks.
- SDC received £43,500 and Warwickshire County Council £14.07m in the first round of funding in response to COVID-19.

### April

- SDC's Land Charges service closes for new applications.
- Emergency accommodation offered to those sleeping rough.
- First batch of grants totalling £4.6m awarded to 291 Stratford District businesses.
- Temporary changes to decision-making processes for Licensing and Planning.
- With SDC's help a donation of PPE - 25,000 masks and 200 disposable protective suits - was delivered from Meishan in China for NHS staff to use at Warwick Hospital treating COVID-19 patients and across the NHS community services.



- SDC secures £158,000, from BEIS Heat Networks Delivery Unit (HNDU), to move a project for a District Heating Network for the Stratford-upon-Avon Canal Quarter to the Detailed Project Development Stage.

### SDC's priorities during the COVID-19 pandemic were:

- The protection of our staff, councillors and contractors as a responsible employer and to protect and support our residents from the impacts of COVID-19.
- Maintain critical services for the Council, including those that are supporting residents and businesses during the emergency, such as our Council Tax Reduction Scheme.
- Support to businesses through the rapid processing of payments for Government reliefs and grants.
- Support to help protect the most vulnerable within our communities.
- Maintaining the decision making capability of the Council, reflected in the updated constitution. This will allow us to operate as far as possible on a 'business as usual' basis.

### By Easter SDC had:

- Ensured that, other than those services impacted by social distancing rules, all District Council services continued to be delivered.
- Maintained refuse, recycling and green waste collection service as normal.



Biffa's wall of thanks

- Been a first point of contact for residents, businesses and the local community. Overall call numbers were up 25% - although some days saw calls more than double.
- Set up a fully functioning and operational Community Hub for food deliveries and had made 360 deliveries to the most vulnerable in the local community.
- Provided emergency accommodation for the homeless to protect them from the additional risks of COVID-19 caused by living on the streets
- Set up an online business grants application form to speed up processing in a secure manner.
- Received more than 1,100 business grant applications and 414 business grant payments made totalling £6.035m.
- Provided individual support to residents struggling to pay Council Tax.
- Set up a dedicated COVID-19 information section on the SDC website where detailed updates were available.
- Made parking free in SDC car parks for NHS staff and Registered Volunteers



## 2020 Year Review

- Made constitutional changes to the running of the Council to ensure decision making can continue.
- Made an immediate grant of £40,000 to ensure VASA can continue to operate over the next three months.

### May

#### Operationally, since the start of the lockdown SDC had:

- Delivered, with the help of volunteers some 800 food parcels.
- Provided grants of £25.4 million to 2,074 businesses (as at 4 May).
- Taken up to 800 calls a day in our contact centre at the peak.
- Purchased 200 laptops enabling more than 200 staff to work from home.
- Kept the organisation running effectively by using 'MS Teams' and Zoom.
- Participated fully in regional and national fora using video conferencing.
- Introduced a 'buddy system' that keeps all councillors up to date.
- Issued daily press updates and social media posts.
- Home Choice Plus starts advertising properties across the Stratford-on-



- Cllr Christopher Kettle, Chairman of Stratford-on-Avon District Council records a message for VE Day.

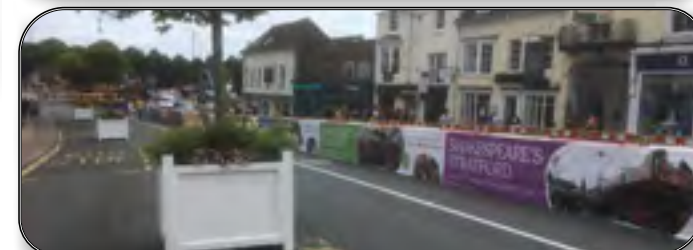


- SDC appoints Julie Lewis as Head of Community and Operational Services

- SDC receives £660,000 from the Government, as part of the response to the COVID-19 outbreak, to help those residents who receive Local Council Tax Support.

### June

- SDC establishes a Discretionary Business Rates Grant, to support those businesses that were not eligible for other business support grants.
- Temporary road scheme introduced in Stratford town centre to assist with the reopening of the town and provide additional space for pedestrians to move safely, for customers to queue outside shops and for businesses to expand to meet customer needs.
- SDC's Land Charges service operational again.
- Further donation of PPE received from Fuzhou in Jiangxi province.



- SDC's recycling rate hits 64%.
- Support and advice given for businesses to reopen across the district.
- Overview and Scrutiny Committee is the first 'virtual' Council meeting to take place using MS Teams.
- SDC continues to help rough sleepers
- Stratford-upon-Avon's outdoor markets, on Fridays and Saturdays, located on Rother Street reopen.
- Waterside Sunday Market returns.
- SDC and Warwick District Council begin exploring ways of working together.
- SDC's Shopmobility service reopens.

### July



## 2020 Year Review

- SDC's CCTV system receives the British Standard Accreditation BS7958 which recognises good management and practice of CCTV and also the Surveillance Camera Commissioner's Code.
- SDC launch 'Restarting Stratford District' Campaign to promote and support the safe reopening of businesses across the district.
- All SDC's outdoor play areas and outdoor gyms reopened, with the exception of the sand pit and paddling pool, at the Recreation Ground Play Area in Stratford-upon-Avon.
- Loxley Neighbourhood Development Plan adopted
- The big wheel returns to Stratford-upon-Avon.
- District Council's offices at Elizabeth House reopen to the public from 10am to 2pm.
- Public toilets across the district reopen.
- New pavement licences established for food and drink businesses.
- New lockable gates installed at Fisherman's car park on Warwick Road, Stratford-upon-Avon, to prevent anti-social behaviour.
- Stratford-on-Avon District's community shielding hub closes, following the relaxation of Government guidance to vulnerable residents.

### Helping businesses across the district

When lockdown was enforced across the country this year, businesses in Stratford district were heavily affected through no fault of their own. But thanks to grants from Your District Council and government support, many have been able to get back on their feet. Here is a snapshot of the businesses around the district that have been helped by Your District Council:

**Guides 'n' Blanks, Studley**  
Specialist fishing shop Guides 'n' Blanks in Studley was able to take advantage of angling's boost in popularity during lockdown. Guides 'n' Blanks in Studley saw its sales skyrocket in the spring and summer, with sales doubling in June compared to a typical month.

**Molly's Cotton Tails, Alcester**  
Organic clothing and toy shop Molly's Cotton Tails hopes to be selling zero-waste food alongside its other ethically-sourced products. The business, owned by lifelong Alcester resident Sara Palmer, has regular customers from as far away as Italy thanks to its strong ethos.

**Samaritans, Stratford**  
The Stratford-upon-Avon and District branch of Samaritans was still able to deliver a full service to vulnerable people right the way through lockdown. And a grant awarded to them by Your District Council meant the branch was able to re-start recruitment and training programmes that had been put on hold.

**Stratford Town FC, Stratford**  
The new season has got underway for Stratford Town FC, and without a grant from Your District Council to cover some of the money lost from voiding last season, they might not have been around to play at all. The club is now hoping for a kind winter so the vast majority of matches can actually be played.

**All that Glitters, Stratford**  
Jewellery and handbag store All that Glitters only opened a week before lockdown, but owner Patrick Kavanagh remains optimistic about the future. Patrick, who moved to Stratford from South Africa last year, was amazed at how quickly his grant application was approved, and has seen plenty of support from shoppers in Stratford.

**Underwood Wines, Stratford**  
A boom in private customers enabled wine merchants Underwood Wines to keep going during lockdown. The grant for the firm, founded in 1980 by brothers Nick and Tim Underwood, was also able to put them in a stronger position when trading was at its worst.

**Henley Kitchen and Bakery, Henley-in-Arden**  
Henley Kitchen and Bakery had to adapt its business model when the Coronavirus lockdown came into force and is now making its changes semi-permanent to benefit the community. It supported the community by providing essential produce in addition to a delivery service to those isolating – and is now continuing to trade as a shop rather than just as a bakery.

**Garden Shed Café, Wellesbourne**  
The Garden Shed Café in Wellesbourne added an extra string to its bow post-lockdown by providing mobile catering at Compton Verney. It created a bespoke branded unit to provide catering at the popular attraction now that visitors are starting to return.

**The Merrie Lion, Fenny Compton**  
The Merrie Lion, a prominent village pub and B&B in Fenny Compton, was another business hit hard by the pandemic. But landlady Daphne Leck found introducing table service actually boosted her drinks sales compared to bar service. She's now planning to keep table service when restrictions ease.

**Foakeswagons, Warrington**  
Used car business Foakeswagons in Warrington, run by Rachel Foakes, was able to stay afloat during lockdown thanks to a grant from Your District Council. She is now confident her firm, which she founded three years ago, will come out of the pandemic in a good position.

**Greenfields Nursery, Shipston-on-Stour**  
Greenfields Nursery in Shipston-on-Stour has been overwhelmed by the kindness and generosity of its local community after its toys were stolen. Its outdoor storage was broken into – but Shipston's residents all banded together to help, with Cllr Jo Barker paying them a visit to hear about their story.

**Uplands House, Upton**  
Luxury B&B Uplands House in Upton could not host guests during lockdown, but was able to keep its staff on to maintain the house and grounds because of Your District Council's support. Owner Poppy Cooskey remains hopeful that guests will continue to book and stay despite the government introducing more COVID restrictions.



## 2020 Year Review

- SDC adopts a new part to its Development Requirements Supplementary Planning Document (SPD) focusing on Climate Change Adaptation and Mitigation.
- New anti-litter campaign 'Don't be a tosser' launched – aimed at reminding people that they need to clean up after themselves and bin their litter or take it home.
- SDC's five leisure centres in Alcester, Shipston, Southam, Stratford and Studley reopen – having been shut since March.
- Annual canvass starts.
- Announcement that Lotus is to establish a new advanced technology centre at University of Warwick's Wellesbourne Campus.
- Visitors return to Stratford-upon-Avon.
- SDC adopts its first Infrastructure Funding Statement (IFS) - a summary of receipts and spending of developer contributions under S106 Agreements and the Community Infrastructure Levy (CIL).
- In light of COVID-19 and the expected economic impact on the development and construction industries, SDC adopts a revised instalments policy for developer Community Infrastructure Levy (CIL) payments.
- Review of Stratford town centre COVID-19 safety measures.



### August

- Official opening of the new Greig Leisure Centre, Alcester.



- Death of former District Councillor and Leader Cllr Bob Stevens - from 1992 to 1996 (Southam) and 1999 to 2011 (Long Itchington) and Leader from 2000 to 2003.
- BT Payphone removal consultation begins for 12 BT payphones in nine parishes.

- FREE cycle skills courses for children in Stratford-upon-Avon.
- Further alterations to Stratford town centre COVID-19 safety measures.
- Applications open for new pavement licences.
- Nviron appointed for SDC's Microsoft 365 project.
- The five Leaders of the District and Borough Council's across Warwickshire issue a joint statement on Local Government Reform.



Left to right: Sebastian Lowe (Rugby Borough Council), Tony Jefferson (Stratford-on-Avon District Council), Julie Jackson (Nuneaton and Bedworth Borough Council), Andrew Day (Warwick District Council), David Humphreys (Deputy Leader North Warwickshire).

- Stratford-upon-Avon hosts Young Market Traders competition.

## 2020 Year Review

### September

- Cllr Matt Jennings (Henley-in-Arden Ward Member) appointed as Tourism and Economic Development Portfolio holder on Stratford-on-Avon District Council's Cabinet.
- Decision taken to cancel the Stratford-upon-Avon Victorian Christmas Market.
- Councillor Tony Dixon (Tanworth-in-Arden) elected as Chairman of Stratford-on-Avon District Council and Cllr Edward Fitter (Quinton) elected Vice-Chairman for the year.
- Stratford-upon-Avon Mop postponed.



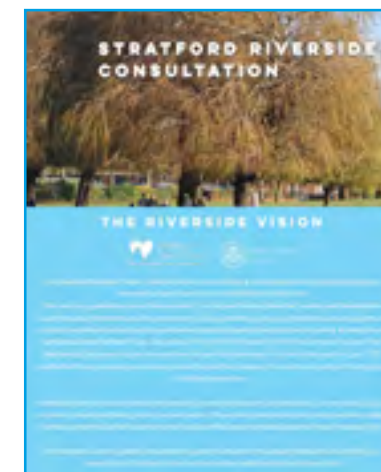
### October

- Cases of COVID-19 begin to rise across the district.
- SDC to administer Test and Trace Self-Isolation Payments.
- The Leaders of SDC and Warwickshire County Council together with local ward Councillors call for a delay to HS2's proposed 9-month road closure to part of the A425 in Southam.
- SDC begins seven-week consultation on the Preferred Options version of its Site Allocations Plan.
- Further round of consultation for Tysoe Neighbourhood Development Plan.
- Cllr Christopher Kettle (Bishop's Itchington) appointed as Community Portfolio holder on Stratford-on-Avon District Council's Cabinet.
- SDC urge residents to 'do the right thing' - advising them to play their part in reducing the spread of the virus by living by the rules of hands, space, face.
- SDC's Licensing Team try out the prototype of a new fleet of electric powered motor boats from Avon Boating that will be licensed for hire next year.



### November

- Second National Lockdown - 5 November to 2 December 2020
- SDC administers second Business Support Grants for lockdown 2.0.
- SDC's Cabinet recommends to Council a proposal to look after new Public Open Space across the district.
- SDC's Cabinet approves joint Waste and Recycling proposal with Warwick District Council
- SDC records highest ever number of affordable homes built in the District last year - a total of 491.
- Launch of public consultation for Riverside Green Corridor in Stratford-upon-Avon - a joint partnership between SDC and Stratford Town Trust, to create new green routes into town.





## 2020 Year Review

### December

- SDC launches legal challenge to Government's tiers with pre-action protocol letter against putting Stratford-on-Avon District in Tier 3 despite low infection rates.
- Free Thursday night parking in District Council-owned pay and display car parks for Christmas shopping in Stratford-upon-Avon.
- Nominations open for Celebration of Sports.



- Temporary walk-in COVID-19 test centre opens at Stratford Leisure Centre.

### Things to look out for in 2021

- January Six-week consultation (starting on 7 Jan to 19 Feb) on the draft Gypsy and Traveller and Travelling Showpeople Supplementary Planning Document
- February Council Tax set for 2021/22.
- April Introduction of garden waste charge. Shakespeare's Birthday.
- May Police and Crime Commissioner elections. Warwickshire County Council elections.
- December Victorian Christmas Market.

### Stratford-on-Avon District Council offices will be closed between Christmas and the New Year

**Stratford-on-Avon District Council will be closed on Thursday 24 December and will reopen on Monday 4 January when reception at Elizabeth House will be open to the public between 10am and 2pm each working day.**

**Normal operating hours are: 8.45am - 5.15pm Mondays, Tuesdays and Wednesdays and 8.45am - 5pm on Thursdays and Fridays.**

**District Council services can still be accessed online at [www.stratford.gov.uk](http://www.stratford.gov.uk) and emergency out-of-hours contact is available on 01789 267575.**

## MEETING DATES 2021

### Stratford-on-Avon District Council meetings 2021

District Council meetings can be accessed and viewed using the link from the front page of the agendas - <https://democracy.stratford.gov.uk/mgCalendarMonthView.aspx?GL=1&bcr=1>

Date	Time	Meeting
Wednesday 6 January	6.00pm	Planning
Monday 11 January	3.30pm	The Cabinet
Wednesday 20 January	6.00pm	Planning
Wednesday 3 February	6.00pm	Planning
Monday 8 February	3.30pm	The Cabinet
Wednesday 17 February	6.00pm	Planning
Monday 22 February	2.00pm	Council
Wednesday 3 March	6.00pm	Planning
Monday 8 March	3.30pm	The Cabinet
Wednesday 17 March	6.00pm	Planning
Wednesday 31 March	6.00pm	Planning

### Webcast of Meetings

The Council, Cabinet and Planning Committee meetings are recorded and loaded onto the District Council's YouTube channel the following day for viewing - <https://www.youtube.com/user/StratfordDC>

You can access this from our website -

<https://www.stratford.gov.uk/council-democracy/councilmeeting-webcasts.cfm>





Stratford-on-Avon District Council working in partnership with



## CHRISTMAS AND NEW YEAR BANK HOLIDAY REFUSE COLLECTION ARRANGEMENTS

Look for the day of the week your rubbish and recycling is normally collected and shown below are the revised collection days for this Bank Holiday.

**There will be no collections of rubbish, recyclables or green waste on Friday 25 December 2020 and Friday 1 January 2021.**

If your usual collection day is	If it is your refuse week your grey bin will be collected on	If it is your recycling week your blue bin will be collected on	If it is your recycling week your green bin will be collected on
Mon 21 December	Normal collection	Normal collection	Normal collection
Tue 22 December	Normal collection	Normal collection	Normal collection
Wed 23 December	Normal collection	Normal collection	Normal collection
Thu 24 December	Normal collection	Normal collection	Normal collection
<b>Fri 25 December</b>	<b>Mon 28 December</b>	<b>Mon 28 December</b>	<b>Sat 2 January</b>
<b>Mon 28 December</b>	Normal collection	Normal collection	<b>Sat 2 January</b>
Tue 29 December	Normal collection	Normal collection	Normal collection
Wed 30 December	Normal collection	Normal collection	Normal collection
Thu 31 December	Normal collection	Normal collection	Normal collection
<b>Fri 1 January</b>	<b>Sat 2 January</b>	<b>Sat 2 January</b>	<b>Sat 2 January</b>

**Collections will return to normal week beginning Monday 4 January 2021.**

In the event of adverse weather affecting collections please check the District Council's website at [www.stratford.gov.uk/winter](http://www.stratford.gov.uk/winter) or Twitter on [@StratfordDC](https://twitter.com/StratfordDC) for all the latest updates.

STRATFORD-ON-AVON DISTRICT COUNCIL

WWW.STRATFORD.GOV.UK

## Clip & Collect Garden Waste Service

### How do I opt-in to have my green bin emptied?

**1** Sign-up at [www.stratford.gov.uk/gardenwaste](http://www.stratford.gov.uk/gardenwaste) or telephone 01789 260628.

**2** Pay £40 per green bin for a 12 month subscription from 1 April 2021 to 31 March 2022.

**3** You will receive a permit to put on your green bin prior to 1 April 2021.

**4** The service will start on 1 April 2021, for those who have subscribed. Your green bin will not be emptied if you have not signed up.

Sign up between 11 January and 28 February 2021 for an early bird charge of £35 per green bin

Food waste can still be collected on your recycling week even if you don't subscribe to the garden waste service. FREE food waste caddies are available on request.



For more information, please telephone 01789 260628 email [streetscene@stratford-dc.gov.uk](mailto:streetscene@stratford-dc.gov.uk) or visit [www.stratford.gov.uk/gardenwaste](http://www.stratford.gov.uk/gardenwaste)



[www.stratford.gov.uk](http://www.stratford.gov.uk)



[info@stratford-dc.gov.uk](mailto:info@stratford-dc.gov.uk)



[www.facebook.com/StratfordDC](https://www.facebook.com/StratfordDC)



[twitter.com/StratfordDC](https://twitter.com/StratfordDC)



[www.linkedin.com/company/stratford-on-avon-district-council](https://www.linkedin.com/company/stratford-on-avon-district-council)

## CENSUS 2021

### The decennial census is coming.

Households across Stratford-on-Avon will soon be asked to take part in the nationwide survey of housing and the population. It has been carried out every decade since 1801, with the exception of 1941.

Information from the digital-first census will help decide how services are planned and funded in your local area. This could mean things like doctors' surgeries, housing or new bus routes.

Households will receive a letter with a unique access code in the post, allowing them to complete their questionnaire online. Paper questionnaires will be available on request.

### Census day is 21 March 2021.

For more information, visit [census.gov.uk](https://www.census.gov.uk)

- The census is a survey that happens every ten years and everyone takes part.
- The Office for National Statistics (ONS) is responsible for the census in England and Wales.
- The census is important because it gives the most detailed information we have about our society.
- Before ONS publish the statistics, they make sure that they don't include any personal information.
- The information collected in the census remains anonymous for 100 years.
- Everyone must complete the census. Legislation made the modern census a legal obligation in 1920.

Census information informs decisions that improve lives



#### Planning and development

Census information is used to develop local plans to better reflect future needs and to identify inequalities at a very local level.



#### Public health and social care

Census information is used to inform service demand, to identify pockets of health deprivation and to support future care planning.



#### Housing

Census information is used to assess local housing needs and to measure housing affordability.



#### Education

Census information is used for pupil forecasting models, to inform capital bids and to monitor the supply of qualified persons.



#### Transport

Census information is used for funding bids for road improvements, and informs planning and profiles around areas of transport change.



#### Other

Census information is used to inform emergency services, libraries and waste collection and disposal.

The census will focus on engaging with everyone, including under-represented and hard to reach groups.

Help will be available for people who need support to take part online.

We will be grateful for the support given by our parishes, towns and partners in promoting the census and encouraging people to complete it.

#### Your local contacts are:

Sally Bannister, Census Community Engagement Manager for Stratford and Warwick Districts, Office for National Statistics. Contact: 07452 940469 [sally.bannister68@field.census.gov.uk](mailto:sally.bannister68@field.census.gov.uk)

Simon Purfield, Census Liaison Manager for Stratford District Council [simon.purfield@stratford-dc.gov.uk](mailto:simon.purfield@stratford-dc.gov.uk)

## Venture House continues to provide local businesses with support

**Since Venture House closed its hotdesking and meeting space in March due to Coronavirus, the Council's business centre has continued to keep its serviced office space open and has been supporting local businesses and entrepreneurs as they grapple with the difficult and unpredictable economic situation.**

The first floor serviced offices are let on a flexible and affordable arrangement and have remained virtually fully occupied in recent years. A 2/3 person office is, however, soon to become available and any business interested in taking up space in this friendly easy-in-easy-out commercial space should contact [info@venturehousestratford.co.uk](mailto:info@venturehousestratford.co.uk) for more details.

Since March, Venture House staff and most other Council staff have been working from home. With the Council's Business Rates team administering the Covid-19 business support grants, the Venture House team has been able to focus on providing local SMEs and sole traders with guidance towards the various forms of business advice and support that have been stepped up due to the pandemic.

The Business Centre partners with the [CWLEP Growth Hub](#), which provides business expertise on matters such as business planning, grants, access to finance, growth, investment, export, apprenticeships and more. The Growth Hub is keen to speak to businesses of all shapes and sizes who are looking for business recovery support or are wanting to grow their business or start a new one.

Venture House also works closely with Warwickshire County Council, the CW Chamber of Commerce, educational establishments and other providers to deliver various programmes including a new business start-up programme, digital skills support, Survive Sustain Grow programme, the Kickstart scheme and Redundancy Support Service to name a few. The latest information is available here on the [Venture House website](#).

With many employers having to reconsider their workforce arrangements and many individuals rethinking their work situations and career paths, there is also a huge emphasis on [skills and learning opportunities](#) – just follow the link to read more.

The Growth Hub has recently launched two new initiatives supporting businesses, their employees and employers:

- [CW Employment Solutions](#): for CW employers and job seekers to post jobs, find jobs and connect with support.
- [Find It In CW](#): for businesses to find procurement opportunities, connect with suppliers, advertise offers and promotions and find B2B events and workshops.

As is the case at a time like this, many individuals will be considering self-employment. For those interested in exploring the idea of running their own business, there is the [JumpStart programme](#), delivered online by WCC and the Coventry & Warwickshire Reinvestment Trust.

Venture House issues a monthly small business e-update that anyone can [sign up to here](#) and which is packed full of the latest business news, information and events. Small businesses are also invited to join [Donut Time](#), the Council's monthly business networking group that has been running online since the Centre closed in March. Its aim is to bring local businesses together and give them the opportunity to learn something new, stay connected and maintain their profile during this difficult time. Businesses from across the district are encouraged to join this networking group as it's a great way to build up new contacts and meet old faces.

**Venture**  
HOUSE STRATFORD-UPON-AVON

**Venture House Business Centre**  
[www.venturehousestratford.co.uk](http://www.venturehousestratford.co.uk)

Tel 07583 100488 / 01789 207500

Email [info@venturehousestratford.co.uk](mailto:info@venturehousestratford.co.uk)

Avenue Farm Industrial Estate  
Birmingham Road, Stratford-upon-Avon CV37 8TJ



Coventry & Warwickshire  
Local Enterprise Partnership



[www.stratford.gov.uk](http://www.stratford.gov.uk)



[info@stratford-dc.gov.uk](mailto:info@stratford-dc.gov.uk)



[www.facebook.com/StratfordDC](https://www.facebook.com/StratfordDC)



[twitter.com/StratfordDC](https://twitter.com/StratfordDC)



[www.linkedin.com/company/stratford-on-avon-district-council](https://www.linkedin.com/company/stratford-on-avon-district-council)

## What is a Community Fibre Partnership?

BT Openreach work with the local community to build a customised fibre solution to bring fibre broadband to homes and businesses.

Openreach put a joint funding arrangement in place, which means they contribute some of the costs and the community funds the rest. They then build the most affordable solution they can to meet the needs of the community.

### Community Fibre Broadband Programme update

The schemes in **Quinton** (650 properties) and **Southam/Stockton** (410 properties) are now both fully 100% committed and are both moving to build stage. The **Shipston/Stretton** scheme (250 properties) is already up at 55% so there is good support in that area too. There are 21 other schemes at application stage across our district which will continue to be progressed in 2021.



### How it works

Community decide on Fibre to premises and contact BT to register an interest.



Local Ward members will help here and there is support at SDC too. There is no cost to the community however you will be expected to sign up to a one-year contract with BT.



BT do a business case and bring it back to the community.



If acceptable, BT will form a legal entity with the community. BT fund 50% of the costs. The rest needs to be funded from the Government voucher scheme. If the cost is £10 and 4 homes are eligible for vouchers at £1500 each, then the conditions are met.



If the community sign up to the deal then BT put the scheme into their works



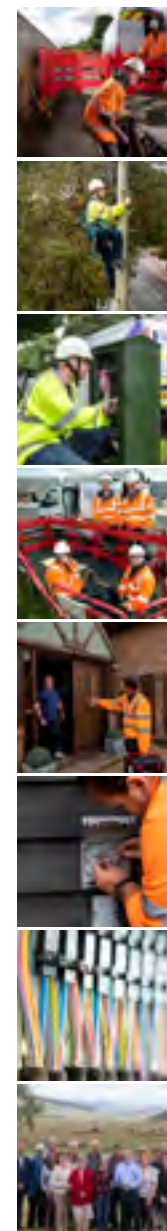
Residents need to sign to a one-year contract with BT. This can run from the end of an existing contract with another provider. Not everyone is willing to do this however SDC can help there.



The works are completed and residents have access to very high speed broadband

For more information please go to

[www.openreach.com/fibre-broadband/community-fibre-partnerships](http://www.openreach.com/fibre-broadband/community-fibre-partnerships)



## Gypsy and Traveller and Travelling Showpeople Supplementary Planning Document (SPD) Consultation

Stratford-on-Avon District Council is holding a public consultation between 7 January and 19 February on the draft Gypsy and Traveller and Travelling Showpeople SPD.

### What is the purpose of the SPD?

The SPD is one of a number of SPDs that accompanies the Council's adopted Core Strategy, and provides detailed advice and guidance to applicants when submitting planning applications relating to Gypsy and Traveller and Travelling Showpeople accommodation. When finished (adopted), it will be used by Stratford-on-Avon District Council to help reach decisions on whether to approve or refuse planning applications.

### What does it include?

The consultation draft sets out the need for additional Gypsy and Traveller and Travelling Showpeople accommodation within the District and identifies areas where new sites may be suitable, subject to planning permission, as well as guidance on what any new sites should look like in respect of their design and layout.

The SPD does not allocate specific land for new permanent sites as this can only be done through a higher level policy document. Prepared as an interim measure, the contents of the SPD will be subsumed into a Gypsy and Traveller Local Plan in due course. The Council has started work on a Gypsy and Traveller Local Plan and is currently exploring options to identify new permanent sites.

### How to Comment

The best way to view the consultation documents is online at [www.stratford.gov.uk/gandt-spd](http://www.stratford.gov.uk/gandt-spd)

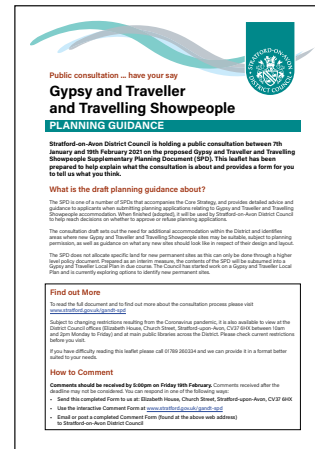
Subject to changing restrictions resulting from the Coronavirus pandemic, it is also available to view at the District Council offices (Elizabeth House, Church Street, Stratford-upon-Avon, CV37 6HX between 10am and 2pm Monday to Friday) and at main public libraries across the District. Please check current restrictions before you visit.

Please use the online consultation form so it is clear which part of the SPD your comments relate to.

Alternatively, please email comments / completed forms to [policy.consultation@stratford-dc.gov.uk](mailto:policy.consultation@stratford-dc.gov.uk)

or post them to: Planning Policy, Stratford-on-Avon District Council, Elizabeth House, Church Street, Stratford-upon-Avon, CV37 6HX.

If you have any queries regarding the consultation please contact the Policy Team on 01789 260334 or email [planning.policy@stratford-dc.gov.uk](mailto:planning.policy@stratford-dc.gov.uk)



## Need HELP... with the survey for your Plan?

A personalised consultation service is available, totally independent from the Parish, Town or Neighbourhood Plan process in your area.

### Stratford-on-Avon District Council's Consultation & Insight Unit offers you:

- > Pick and Mix flexible approach
- > Survey design from draft questionnaire to final report
- > Low cost one-stop shop for all your market research needs
- > Data processing via an unconnected, unbiased third party
- > Anonymity assured
- > Work carried out to Market Research Society guidelines

Satisfied clients include Parish Councils from both within and outside Stratford-on-Avon District.



**Feedback received includes:**  
*"Just wanted to say a big thank you for doing a cracking job on our village survey"*  
*"Again thanks to you and your staff for a professional job - and lots of patience!"*

Get professional assistance for your consultation

### Contact Simon Purfield on



01789 260118



[simon.purfield@stratford-dc.gov.uk](mailto:simon.purfield@stratford-dc.gov.uk)



[www.stratford.gov.uk](http://www.stratford.gov.uk)





## SAVE TIME

2 NEW SERVICES FOR ALL RESIDENTS

Did you know you can now claim Housing Benefit online. Go to [www.stratford.gov.uk](http://www.stratford.gov.uk)

If you want to make a payment for Council Tax or Business Rates use our dedicated payment line **0345 600 6956**



## Council Tax Help

**Are you, or someone in your household, living with:**

- a degenerative brain disorder such as Alzheimer's
- a learning disability
- other kinds of dementia
- a severe stroke
- severe or chronic mental illness

**and are entitled to one of the following benefits:**

- Employment Support Allowance
- Severe Disablement Allowance
- increased Disability Pension
- Personal Independence Payments (PIP)
- Income Support that includes a disability premium
- the care component of high or middle rate Disability Living Allowance
- Constant Attendance Allowance
- Incapacity Benefit

**then you may be entitled to a Council Tax discount**



**and save money off your Council Tax bill**

For more information please contact Revenues on

01789 260990

[revenues@stratford-dc.gov.uk](mailto:revenues@stratford-dc.gov.uk)



## Do you need help with a pest problem in your home or business?

Stratford-on-Avon District Council offers a reliable pest control service with highly qualified, friendly and professional officers.

**Our Pest Control service offers:**

- One-off treatments for domestic and commercial properties for a wide range of pests.
- Speedy response times
- Competitive prices
- Advice visits
- Environmentally friendly
- Ongoing contracts for businesses and farms – These can be tailored to your needs.



During the cooler months, rats and mice will be looking for somewhere nice and warm to nest. To prevent these pests from entering your property it is a good idea to assess your property, sealing up any cracks or holes.

Try to keep clutter to a minimum and garden cut back to prevent shelter for pests.

Store food correctly and dispose of it in an appropriate bin with a secure lid.

**To book a treatment please contact Environmental Health on 01789 267575 email [envhealth@stratford-dc.gov.uk](mailto:envhealth@stratford-dc.gov.uk) or visit [www.stratford.gov.uk/environment/pest-control.cfm](http://www.stratford.gov.uk/environment/pest-control.cfm)**

